

Herzlich Willkommen zum Fachvortrag von
Dipl.-Betriebsw. Marcus Bonrath

**Streckmetall-Fassade als Warmfassade -
so planen und setzen Sie es richtig um!**





Marcus Bonrath

verheiratet

zwei Söhne

Dipl.-Betriebswirt (FH)

Hobbys: Familie, Golf spielen,

Bogenschießen, Fitness

Meine Leidenschaft:

STRECKMETALL

Ich liebe Fragen ...
... und Interaktion!

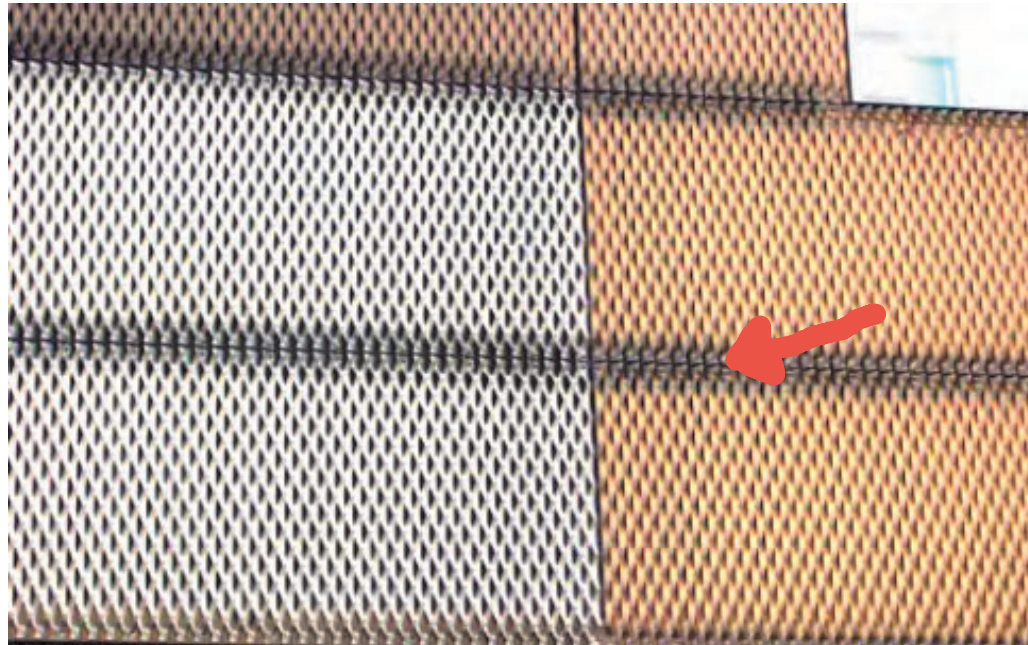


Was ist mein Ziel?

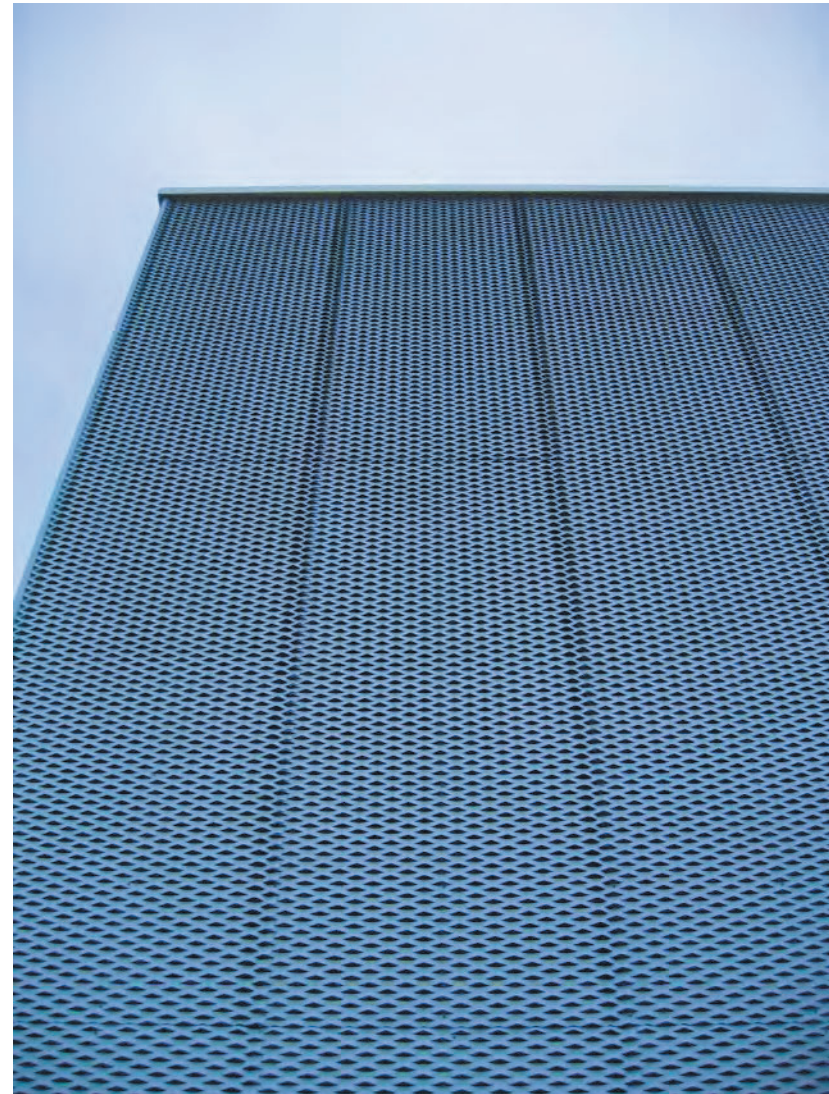
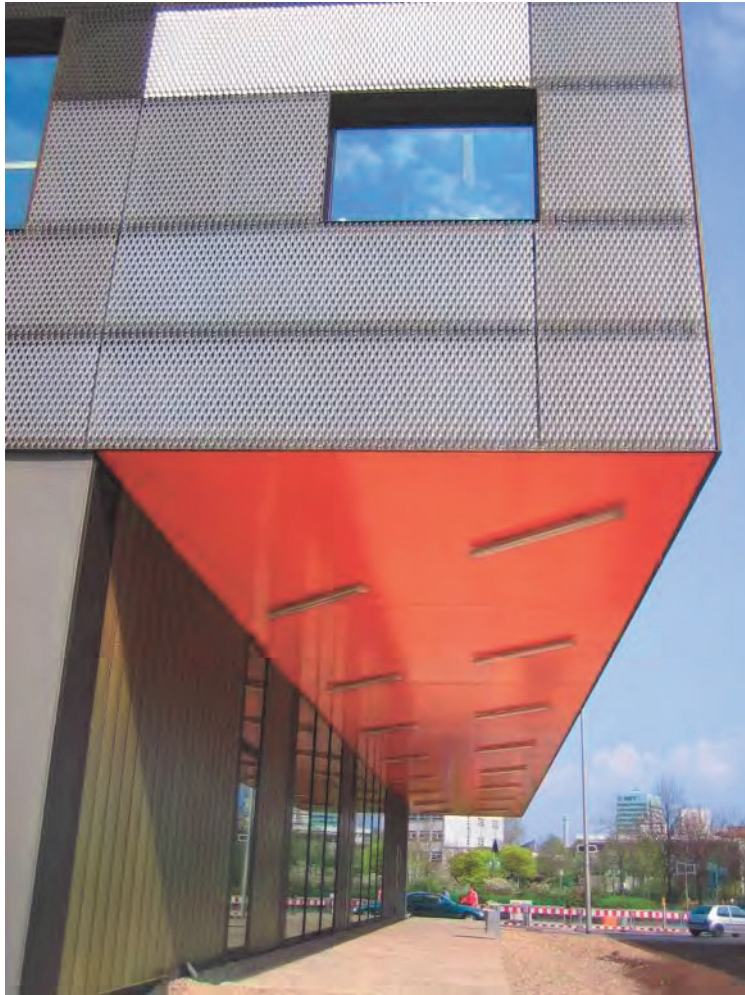
Welche Optik will erzielen?



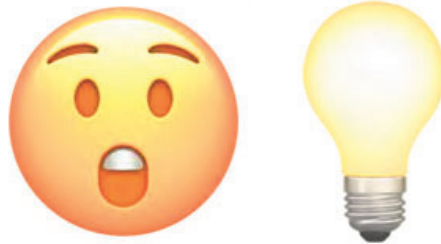
Ziel?



Ziel?



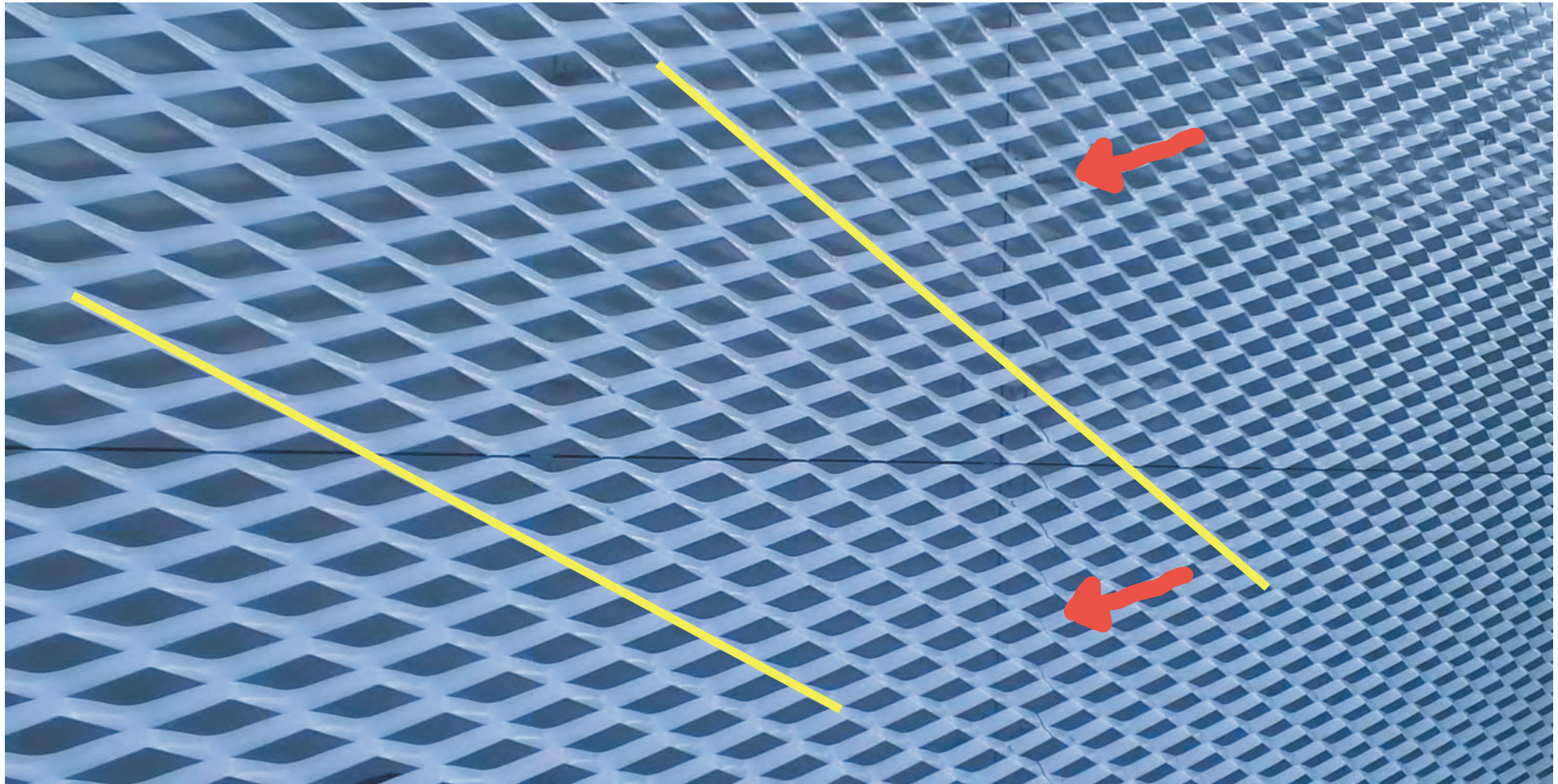
Die Maschen MÜSSEN
nachträglich zugeschnitten
werden!

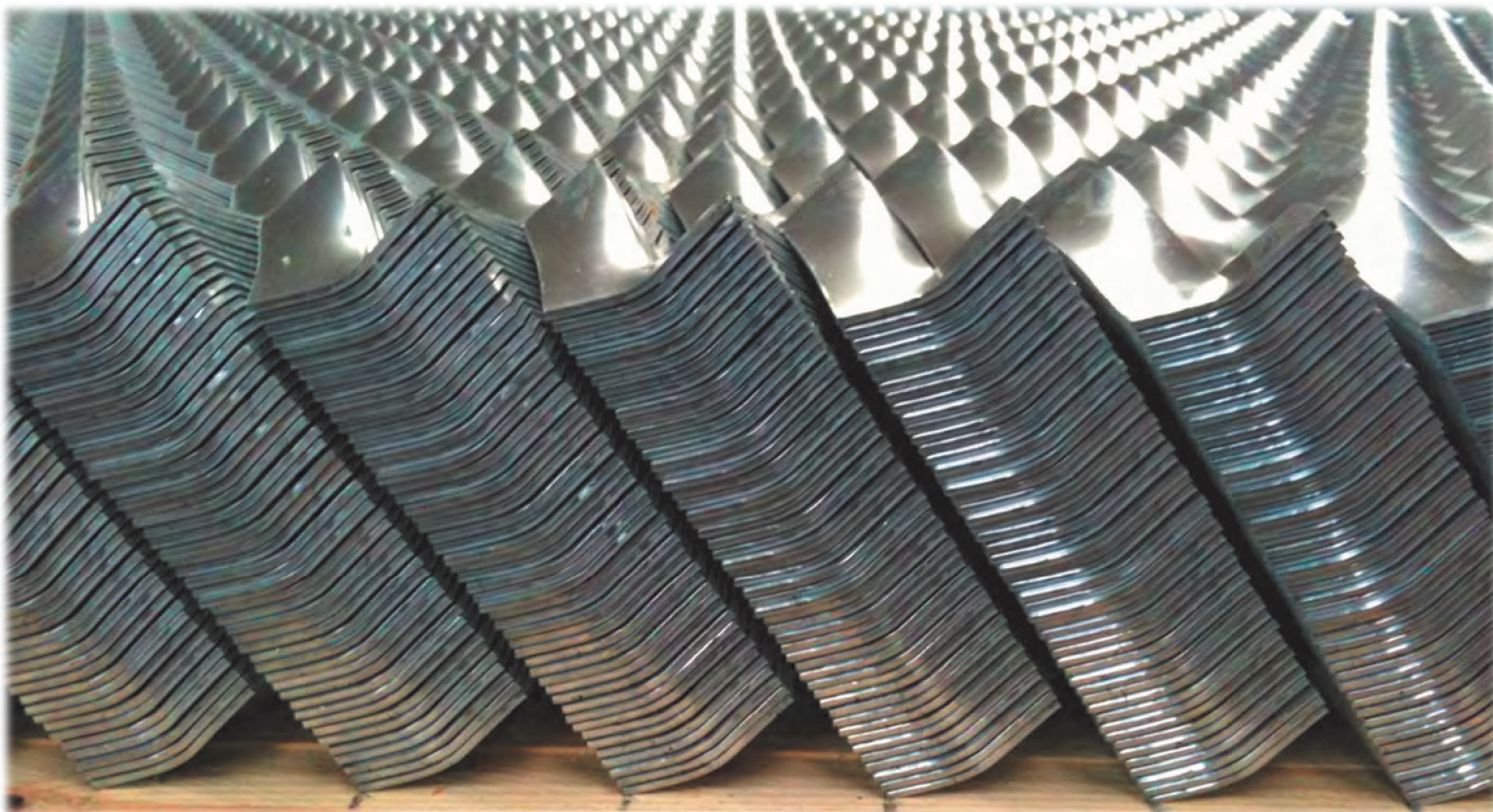


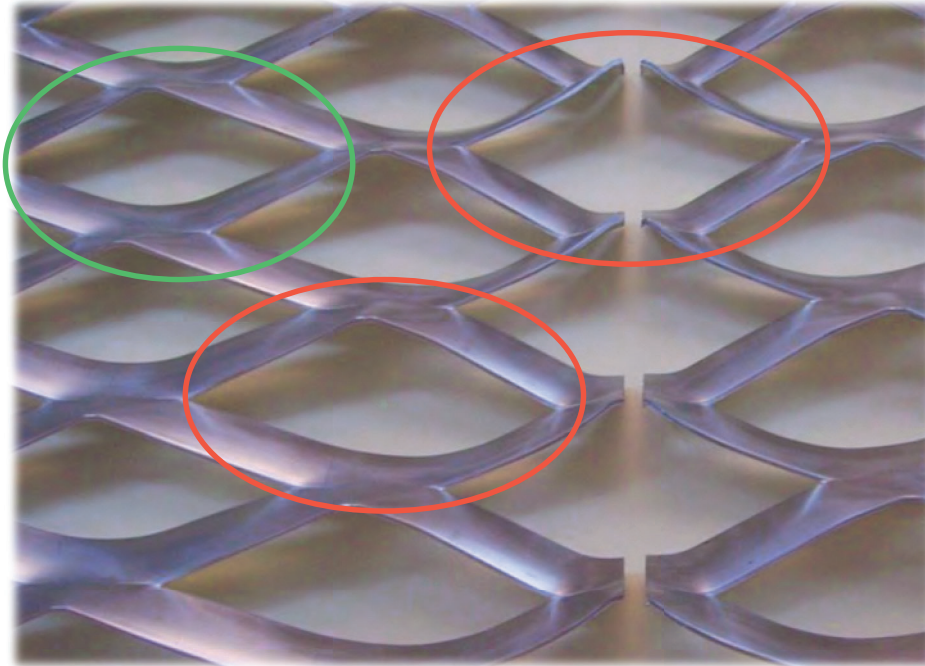


STRECKMETALL | Fassaden in 3D.

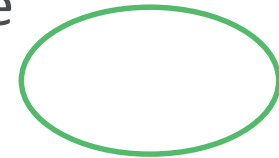
©2020 MARCUS BONRATH



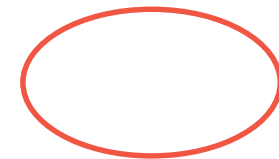


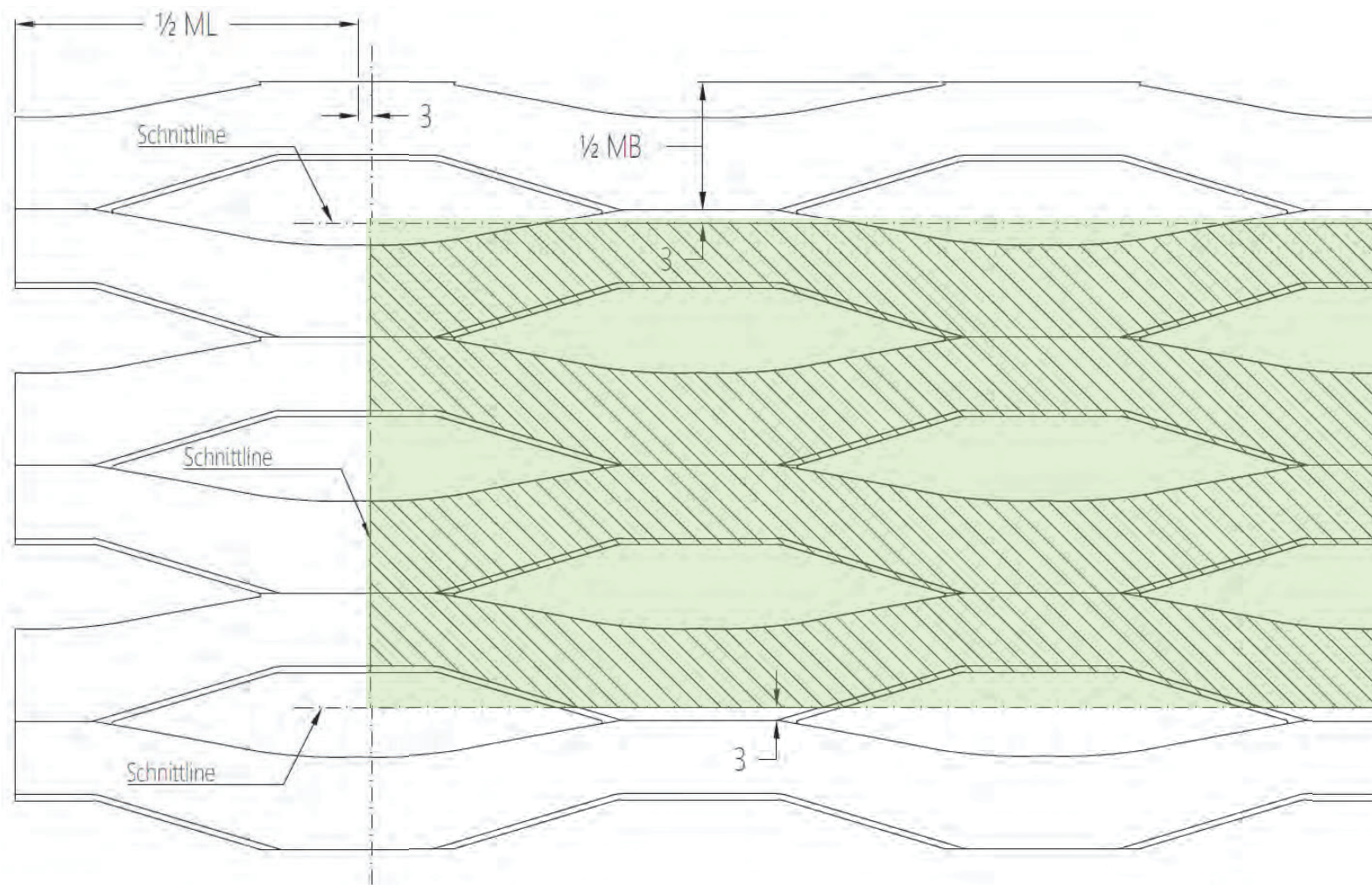


regelmäßige Masche in
der Tafelmitte



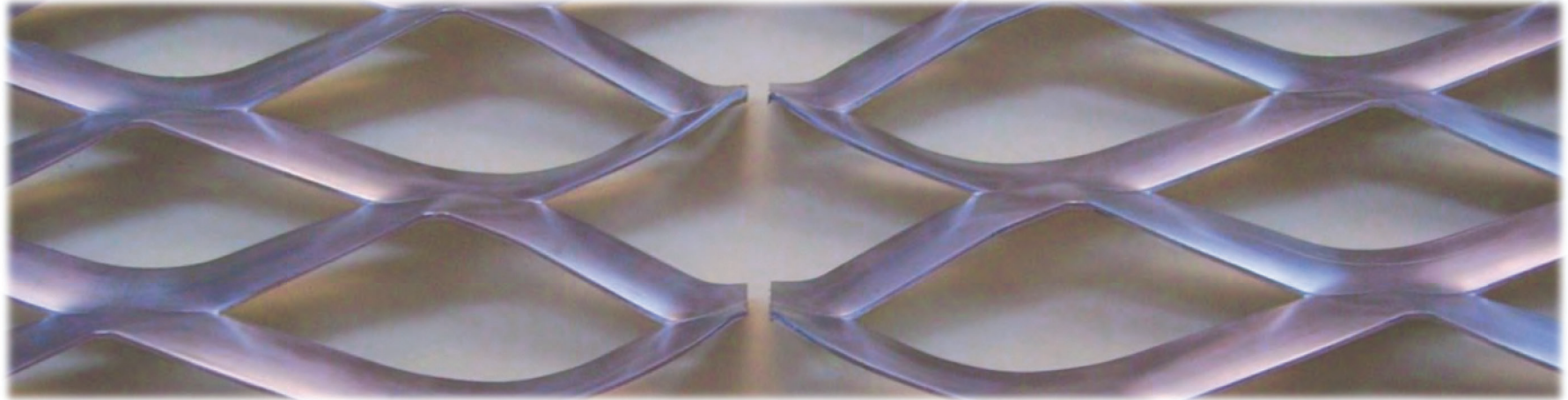
unregelmäßige Masche
im Randbereich



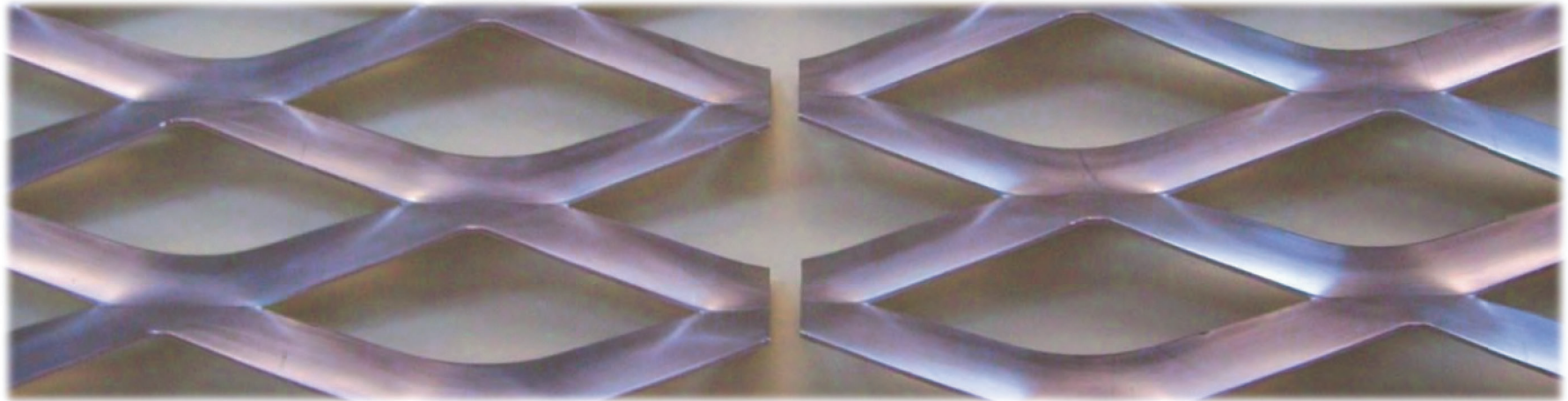


Fertigung

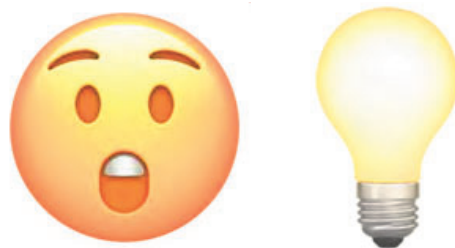
OHNE Zuschnitt



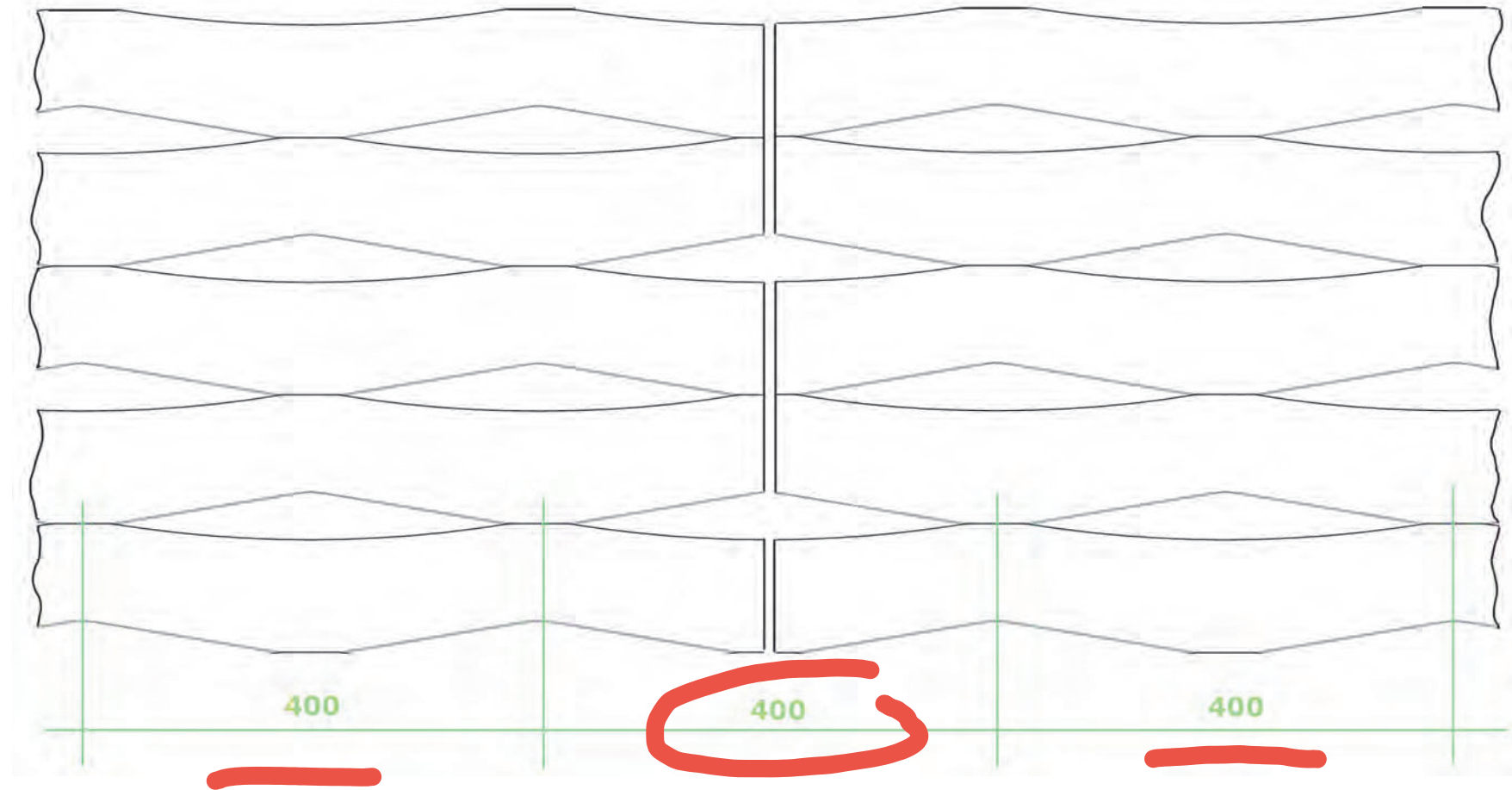
MIT Zuschnitt



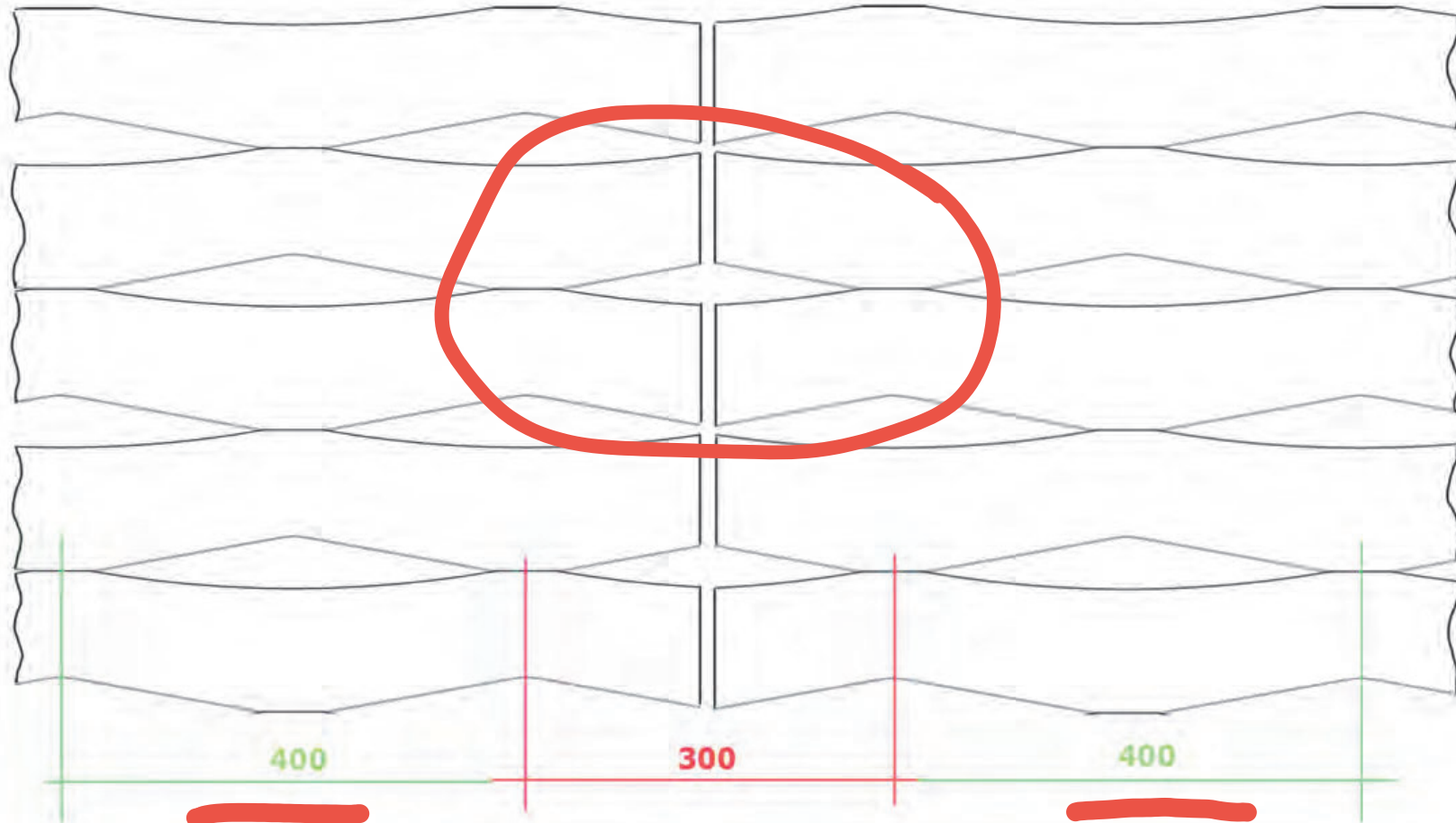
Die Masche MUSS zum
Achsraster passen!



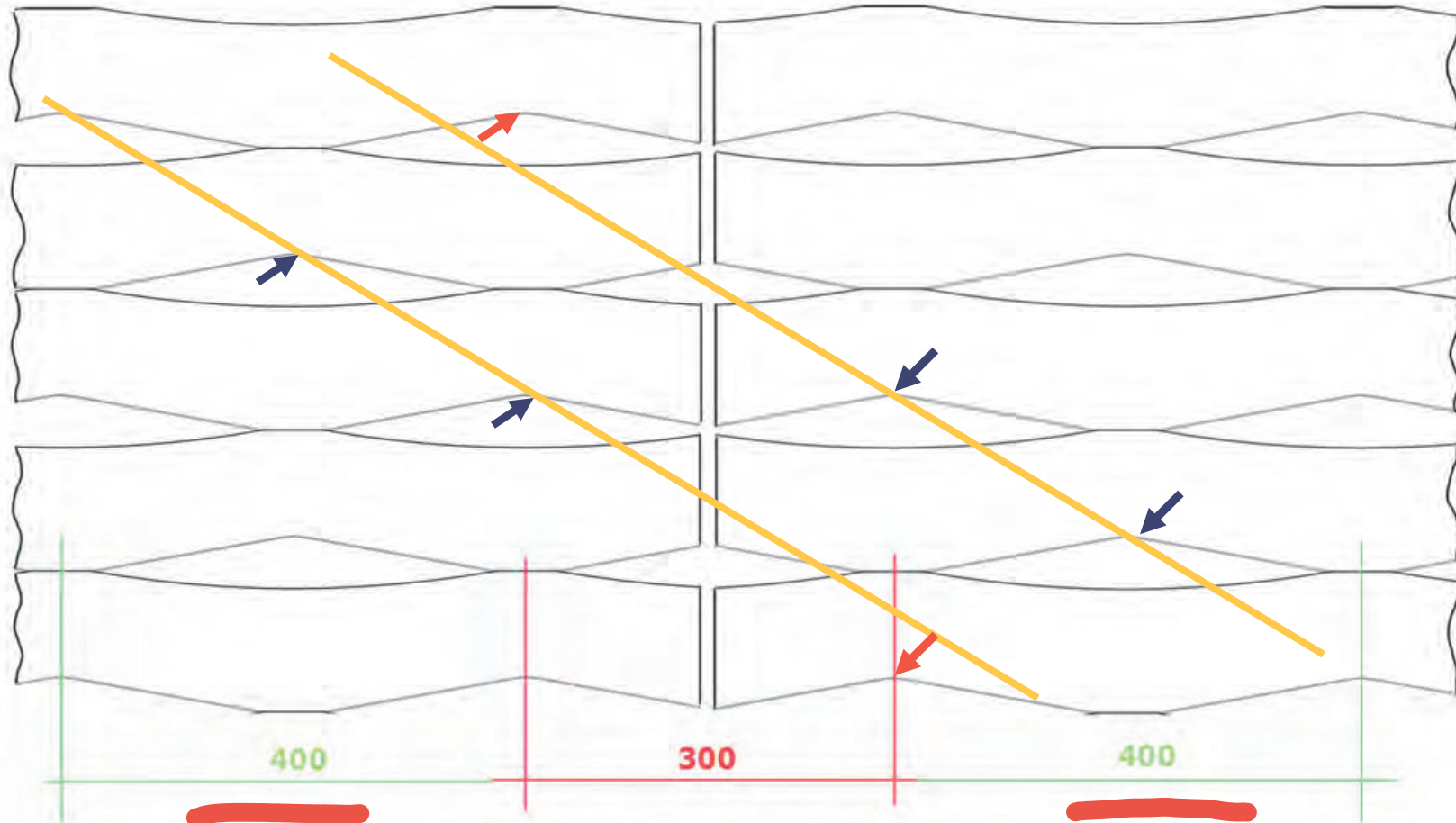
Die richtige Masche



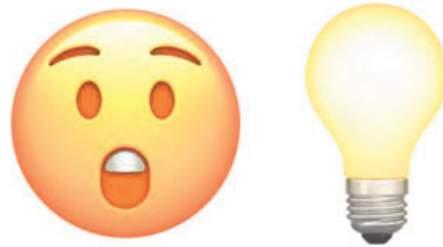
Die richtige Masche



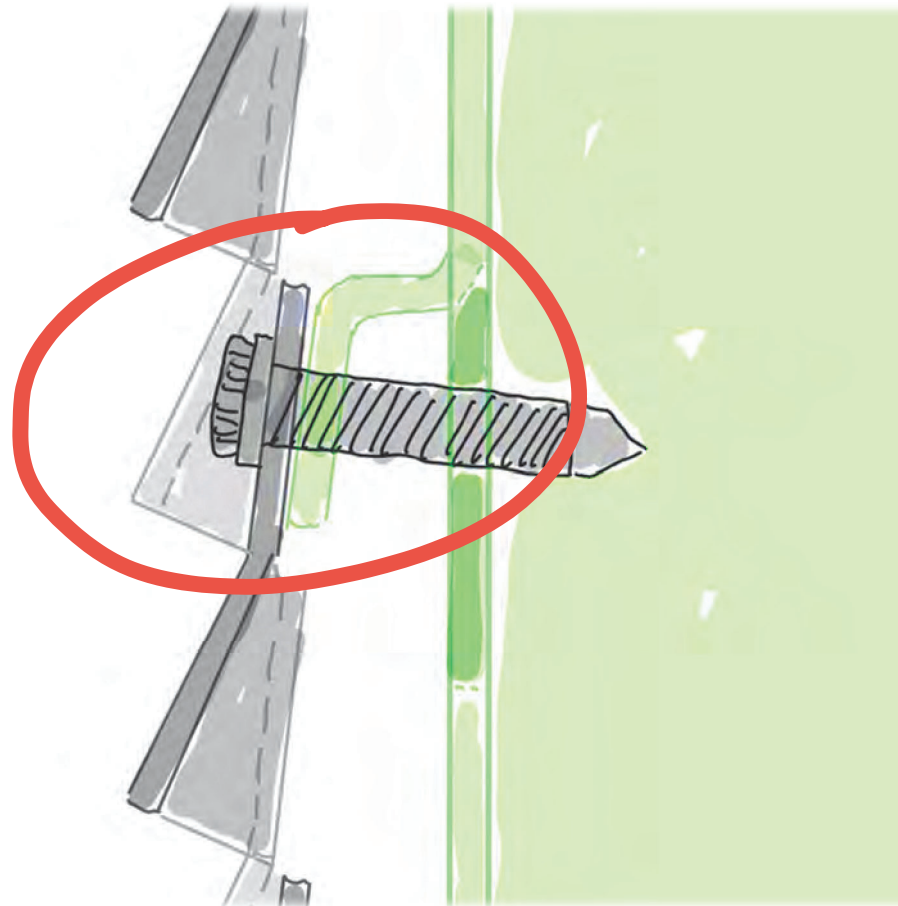
Die richtige Masche



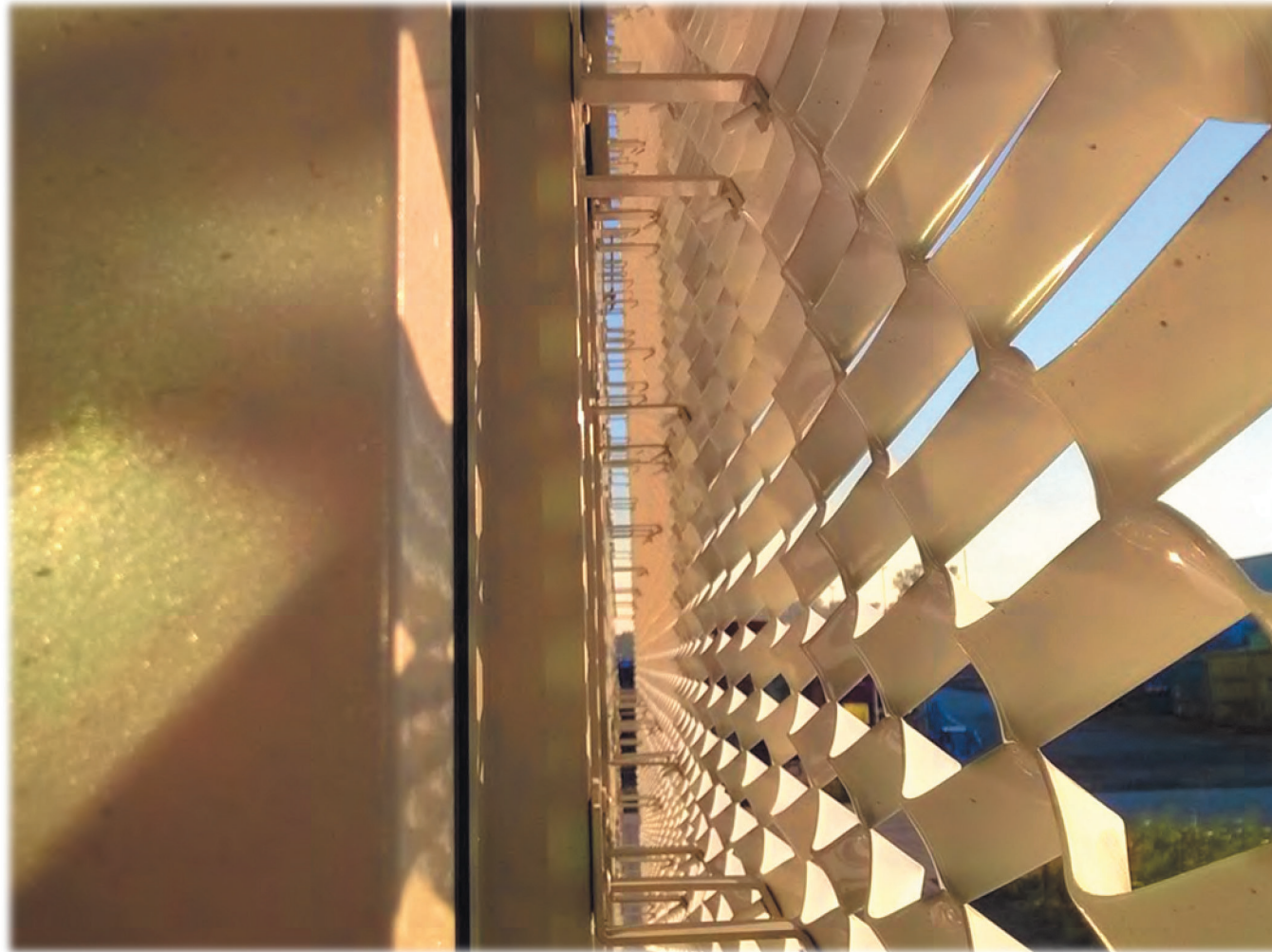
Die Unterkonstruktion MUSS zur Masche passen!



Die richtige UK



Die richtige UK

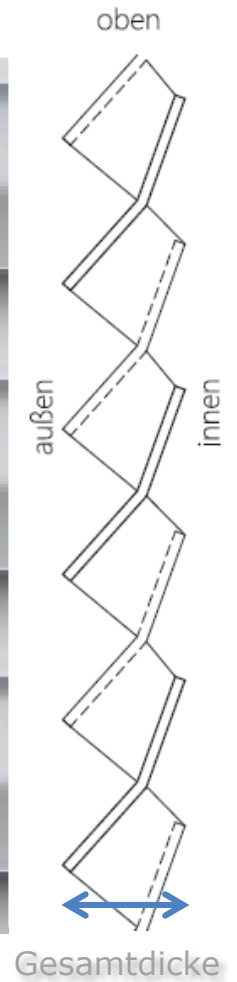
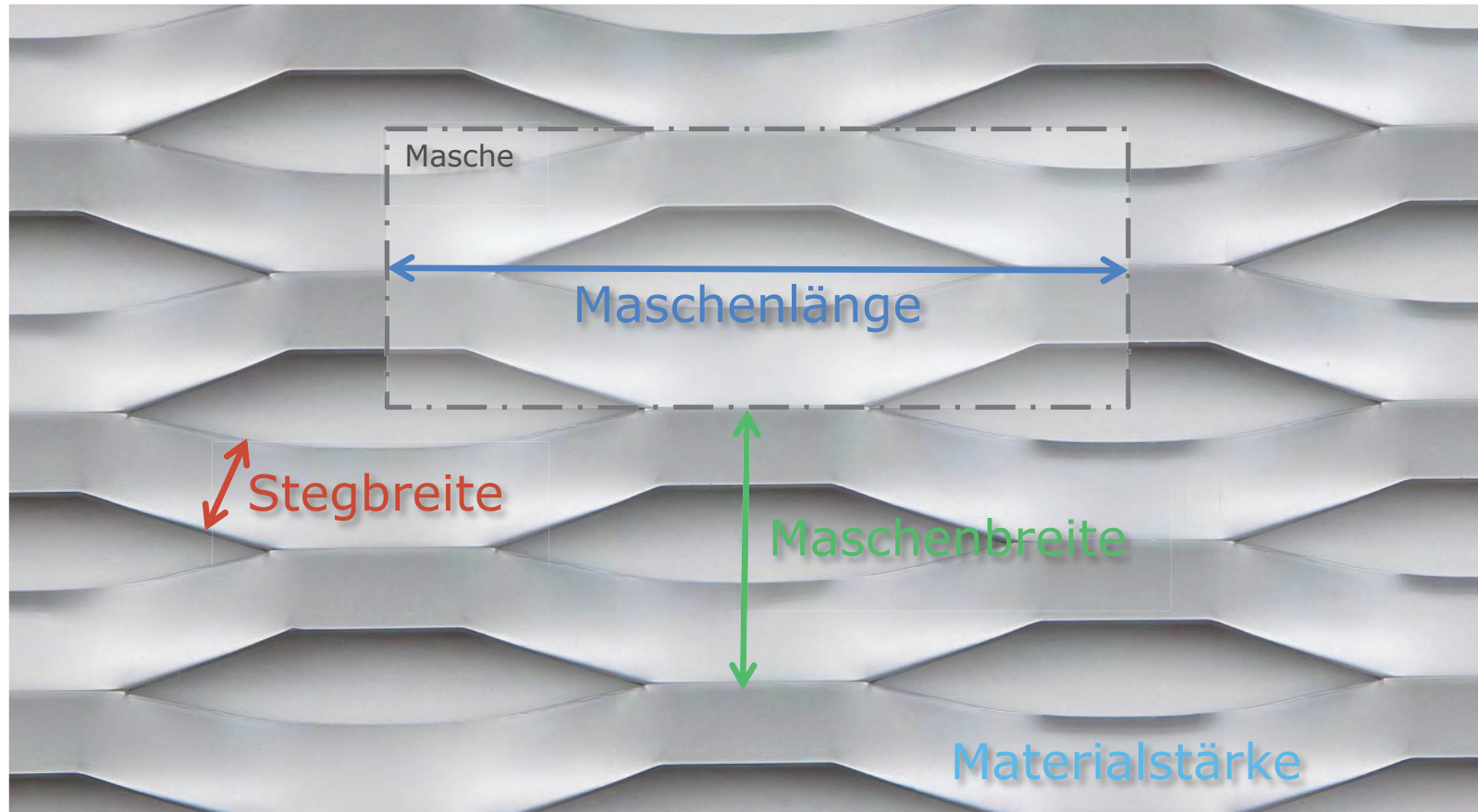


STRECKMETALL | Fassaden in 3D.

©2020 MARCUS BONRATH

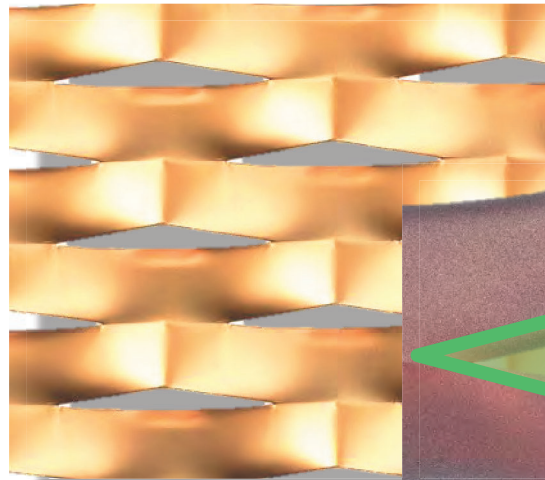
150 x 56 x 21,5 x 2 mm

Beispiel: 150er Masche

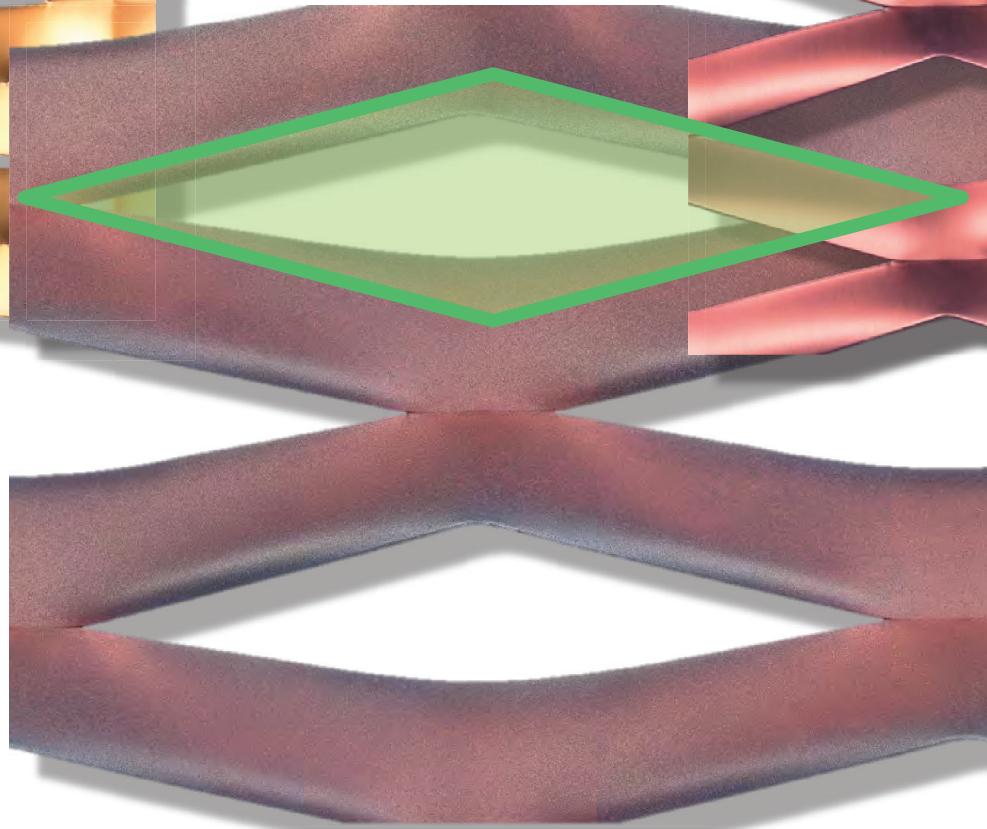
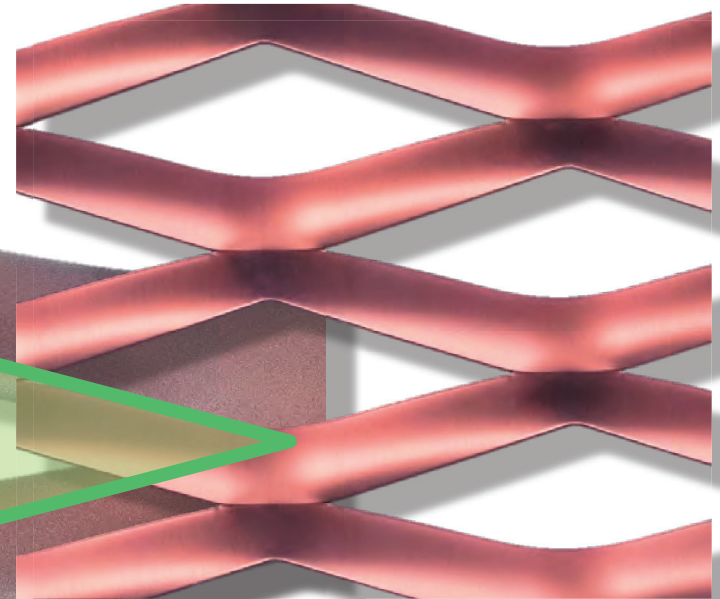


Streckmetall-Basics

Maschenformen

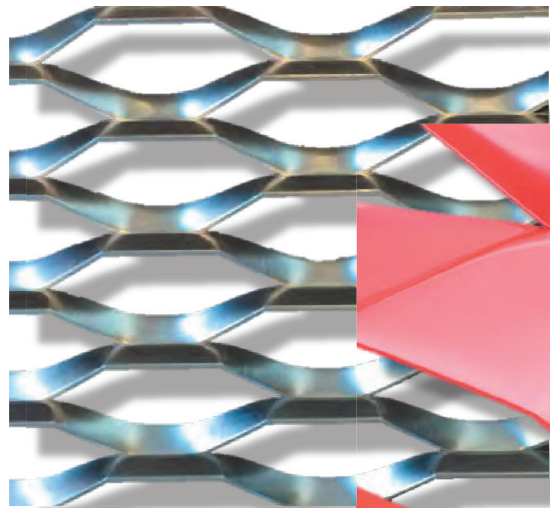


RAUTENMASCHEN



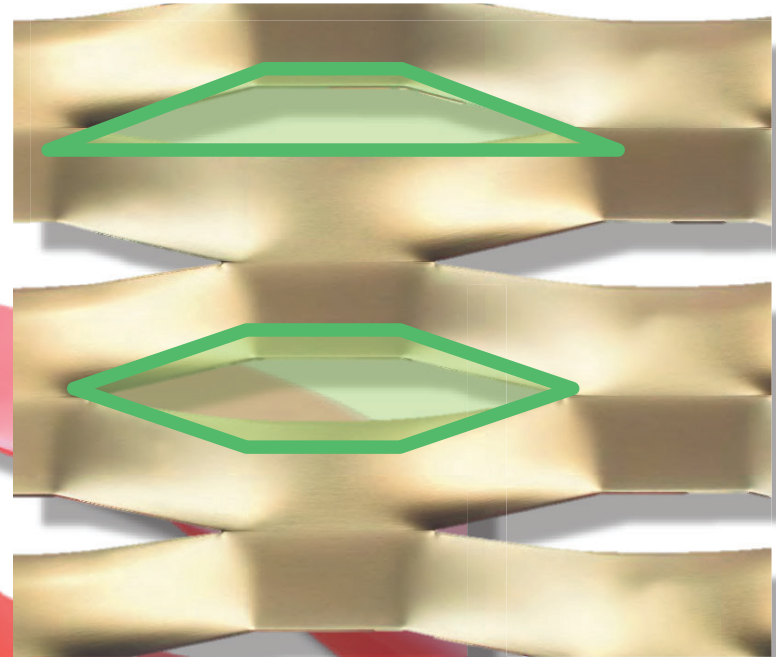
Streckmetall-Basics

Maschenformen



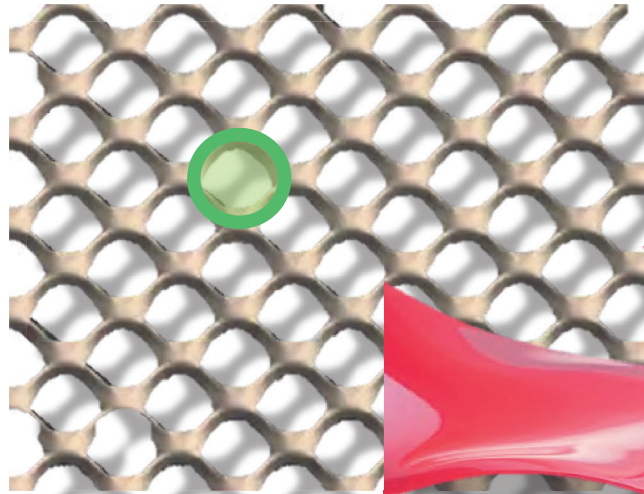
TRAPEZMASCHEN

SECHSECKMASCHEN

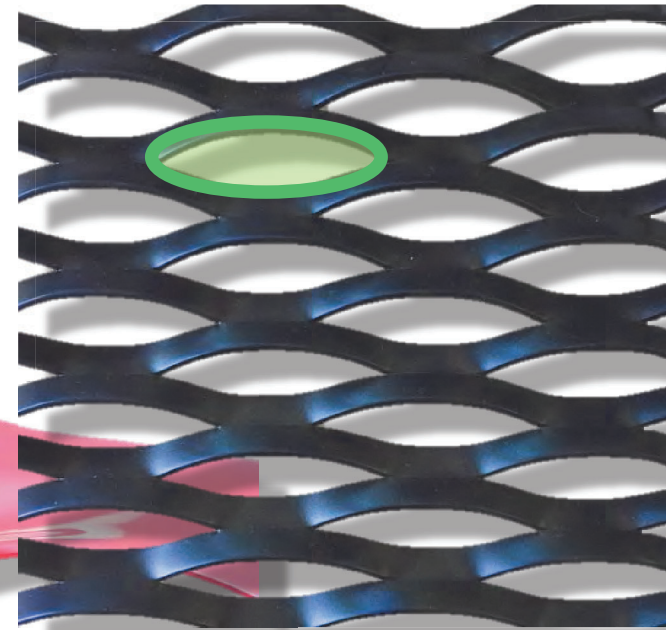


Streckmetall-Basics

Maschenformen



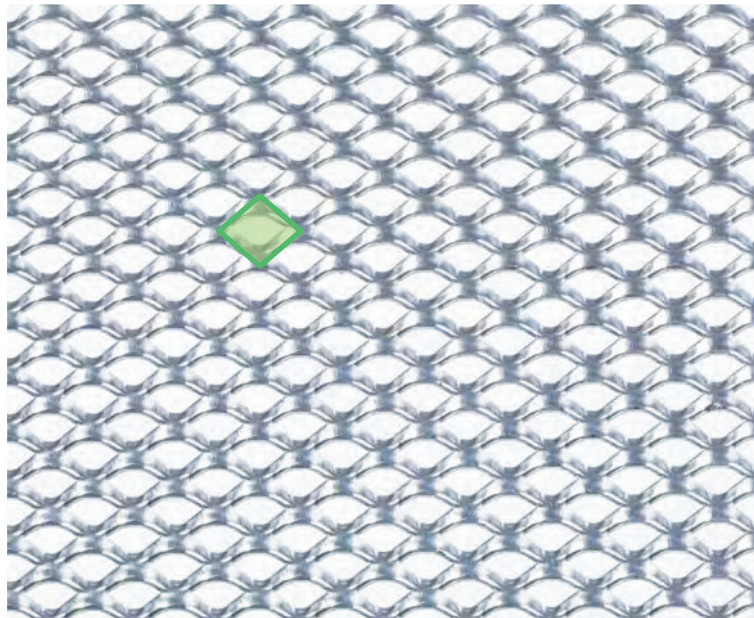
RUNDLOCHMASCHEN



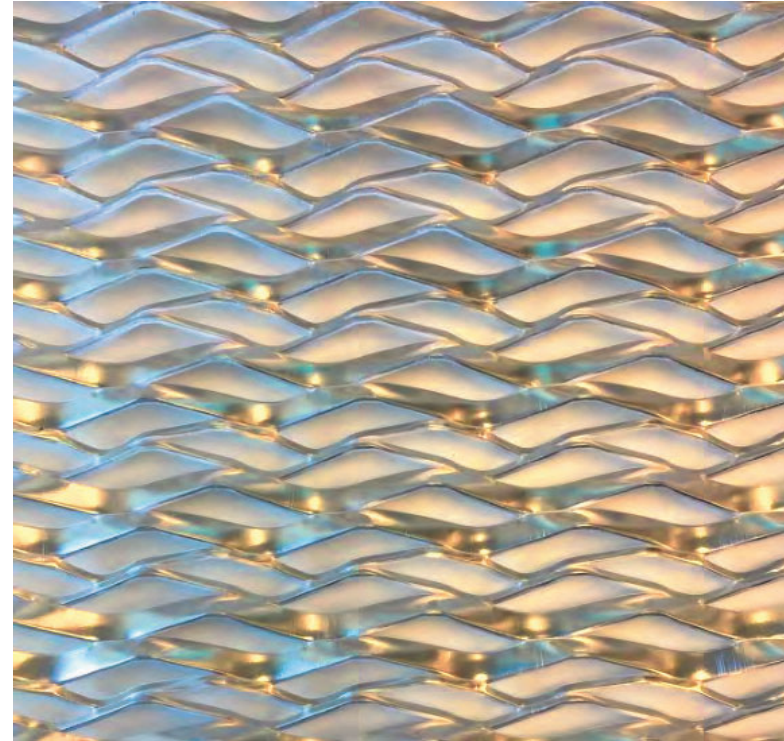
Streckmetall-Basics

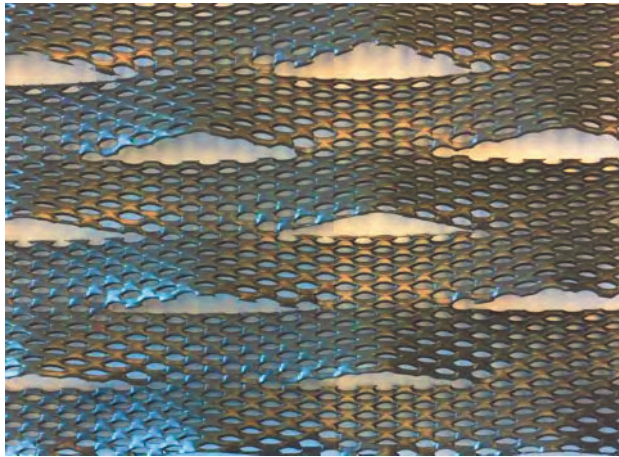
Maschenformen

QUADRATMASCHEN

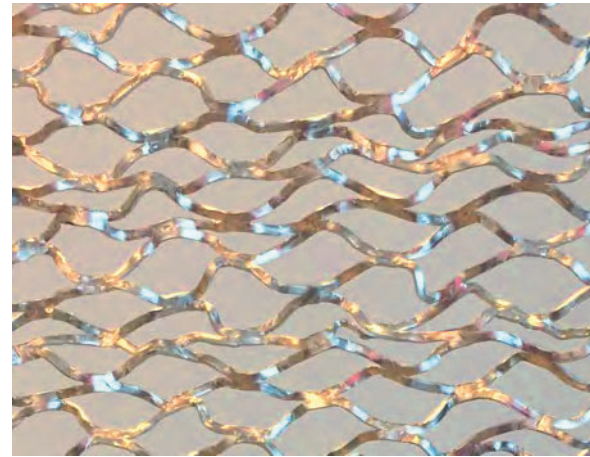


SONDERMASCHEN

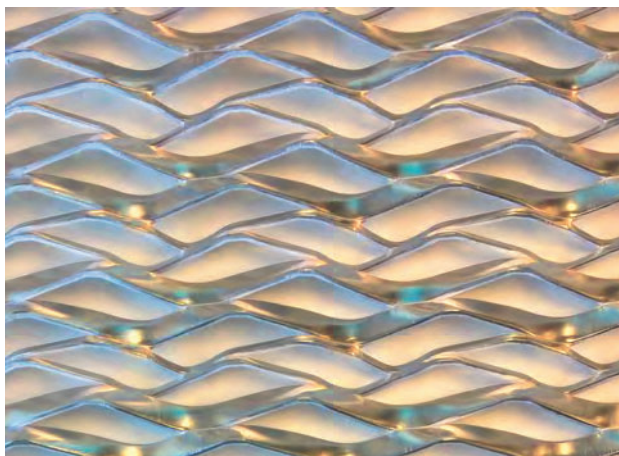




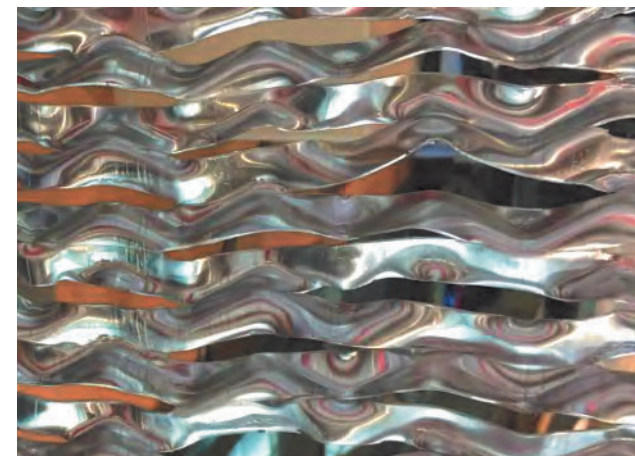
Rautenmasche aus flachgewalzter Rautenmasche

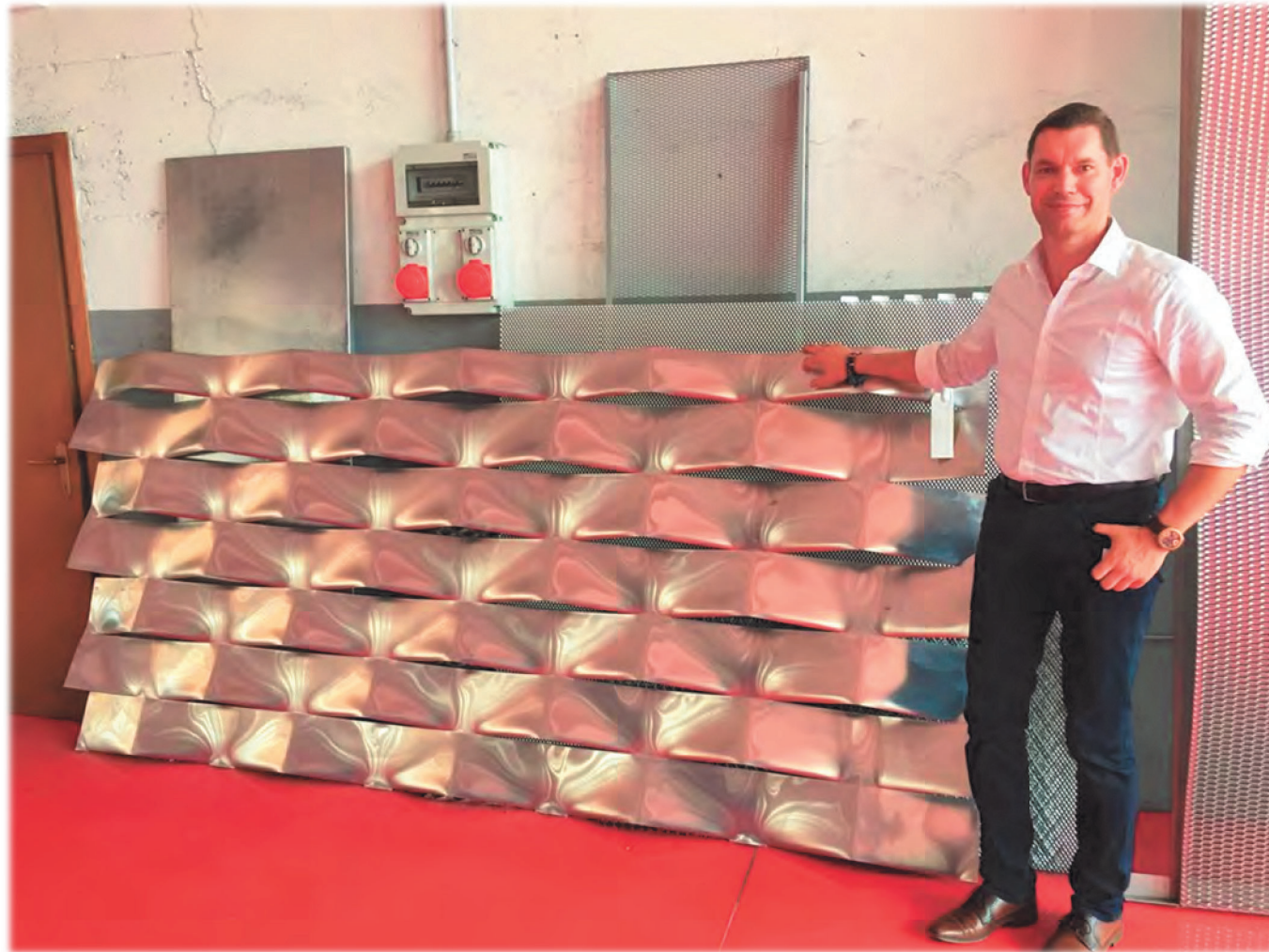


Crinle-Maschen
=
herkömmliches
Streckmetall mit einer
speziellen Walze
nachbearbeitet

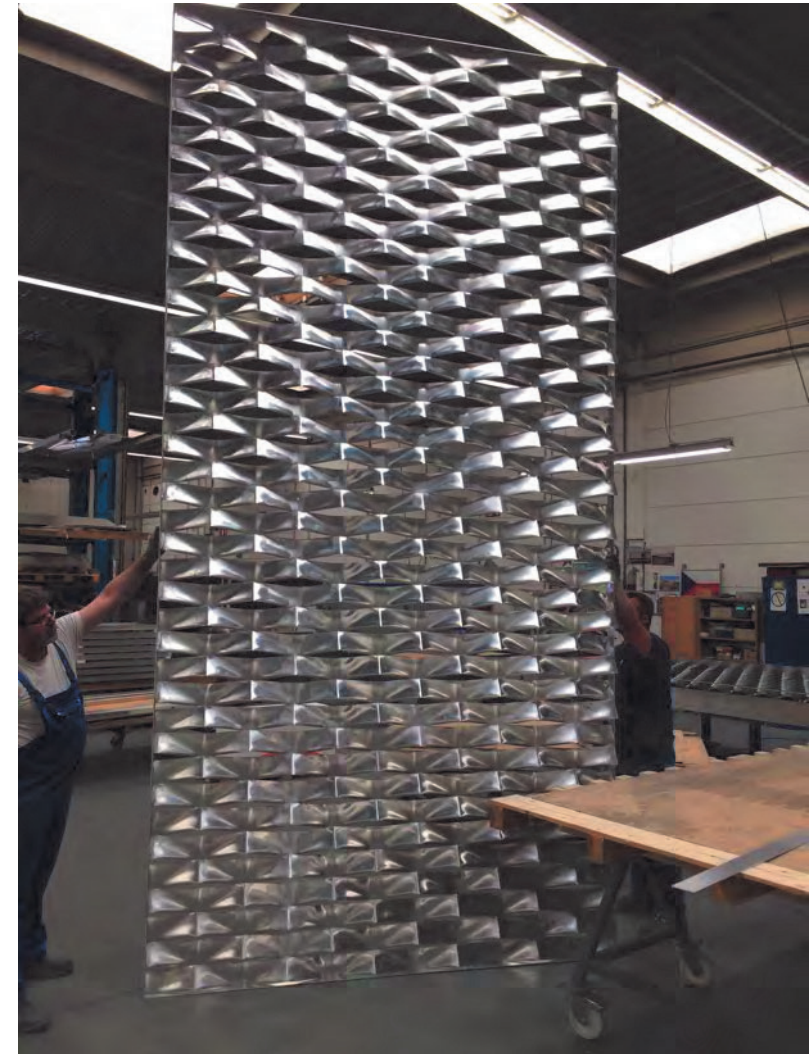
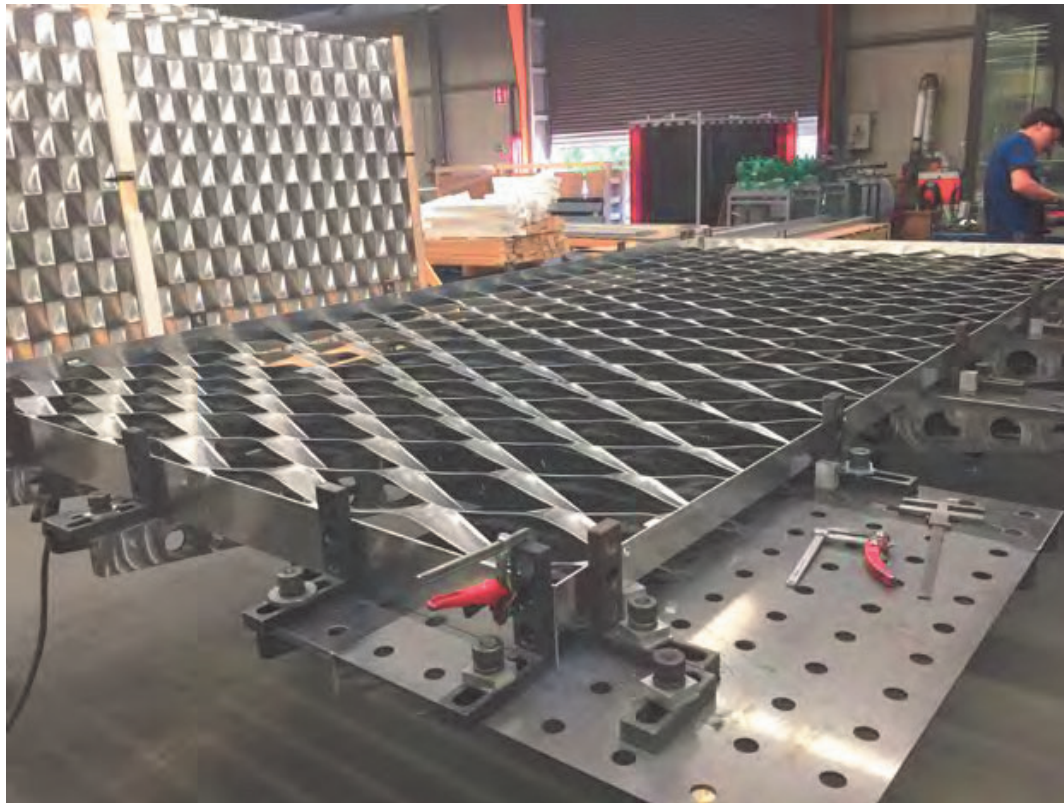


Rautenmasche mit zwei unterschiedlichen
Stegbreiten und 2/3-Versatz

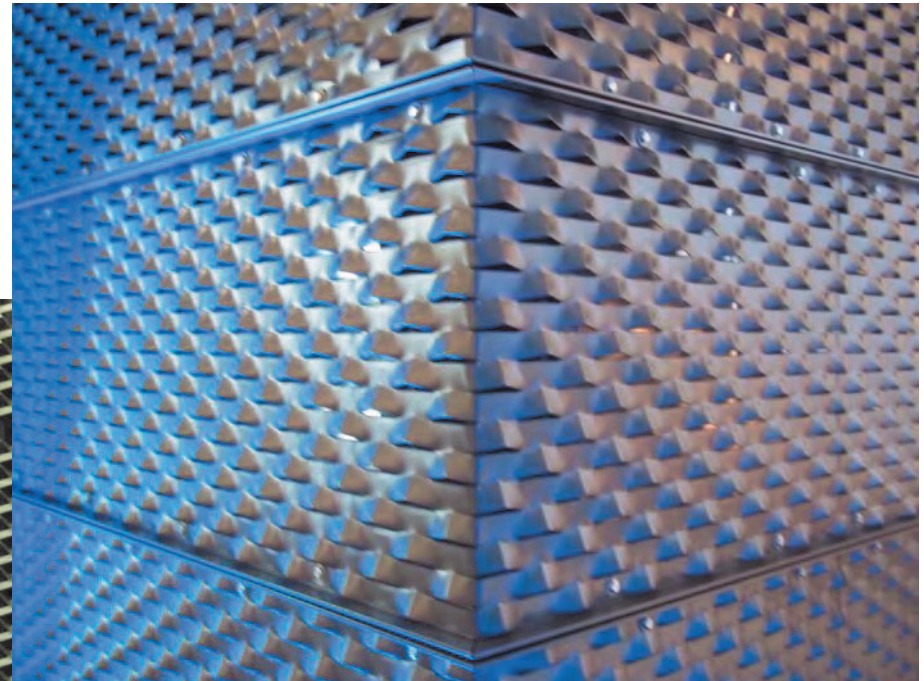
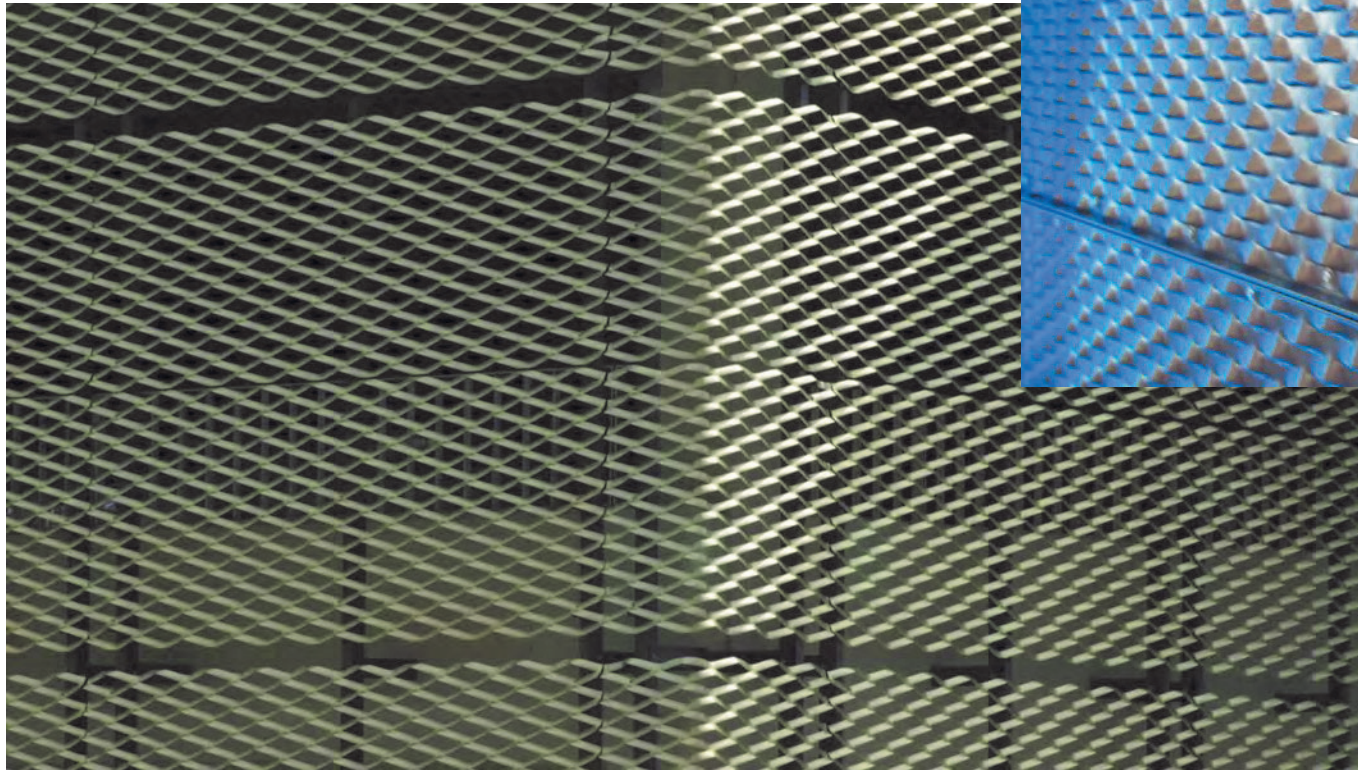




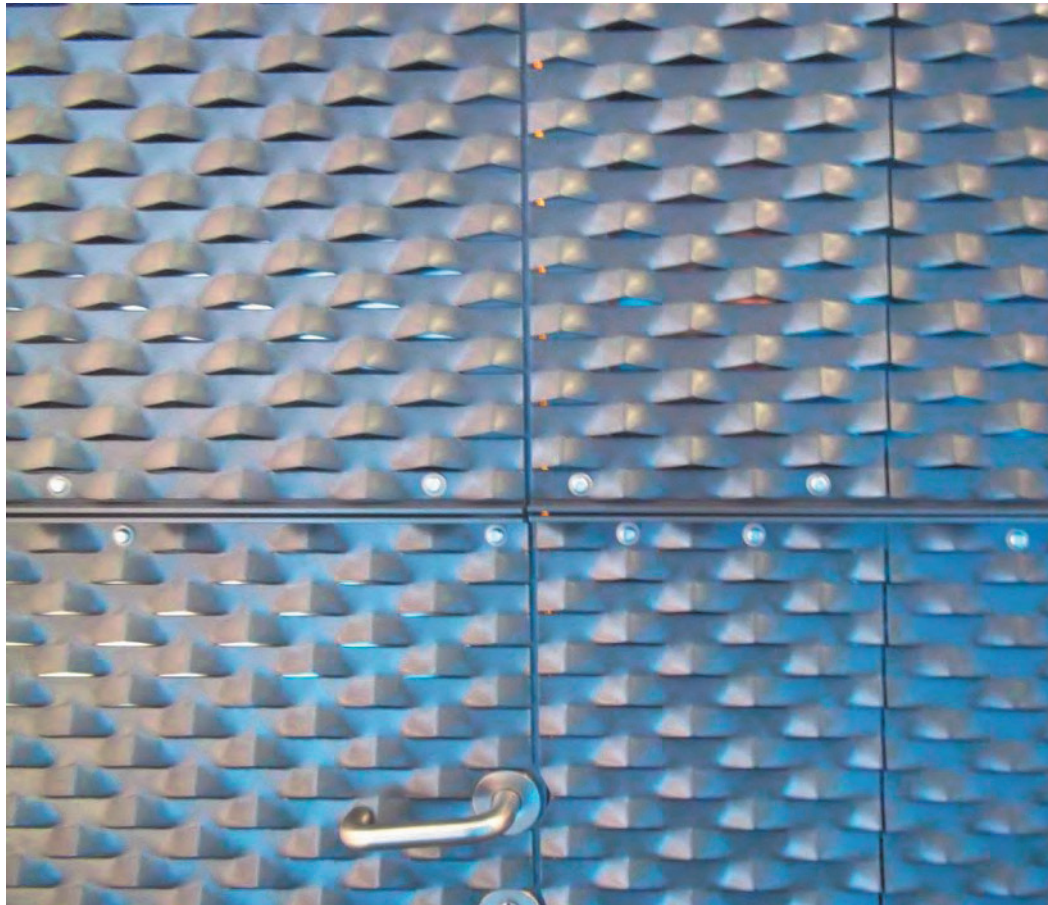
Streckmetall-Basics



Streckmetall-Basics



Streckmetall-Basics





STRECKMETALL | Fassaden in 3D.

©2020 MARCUS BONRATH

OHNE

Wärmedämmung



KALTFASSADE

MIT

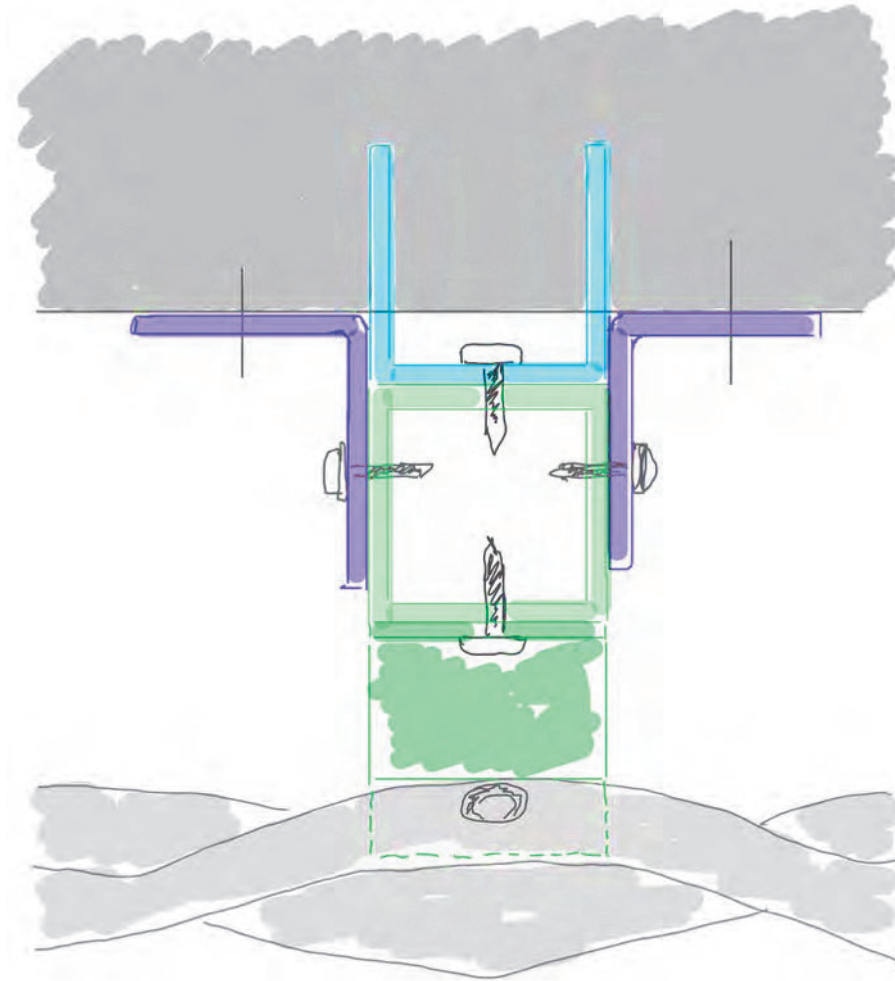
Wärmedämmung



WARMFASSADE

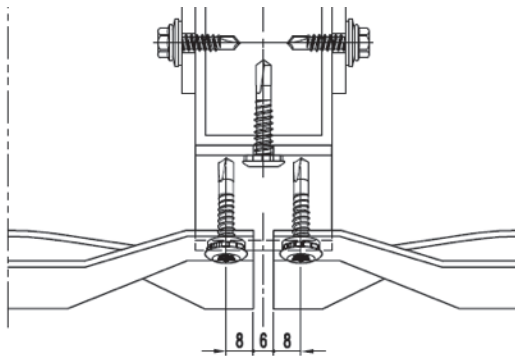
Streckmetall-Basics

Fassadenkonstruktion



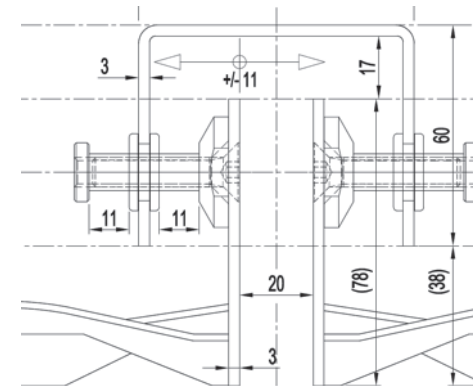
SICHTBAR

befestigt



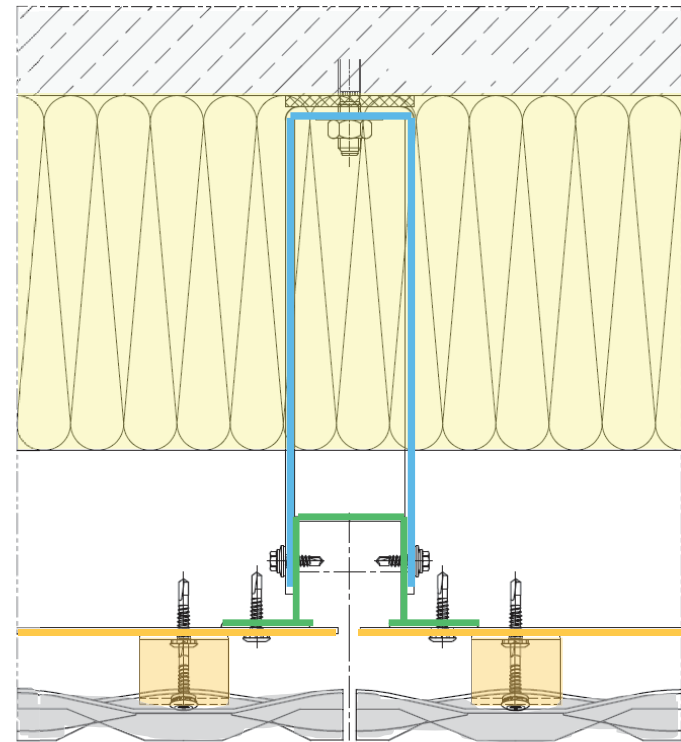
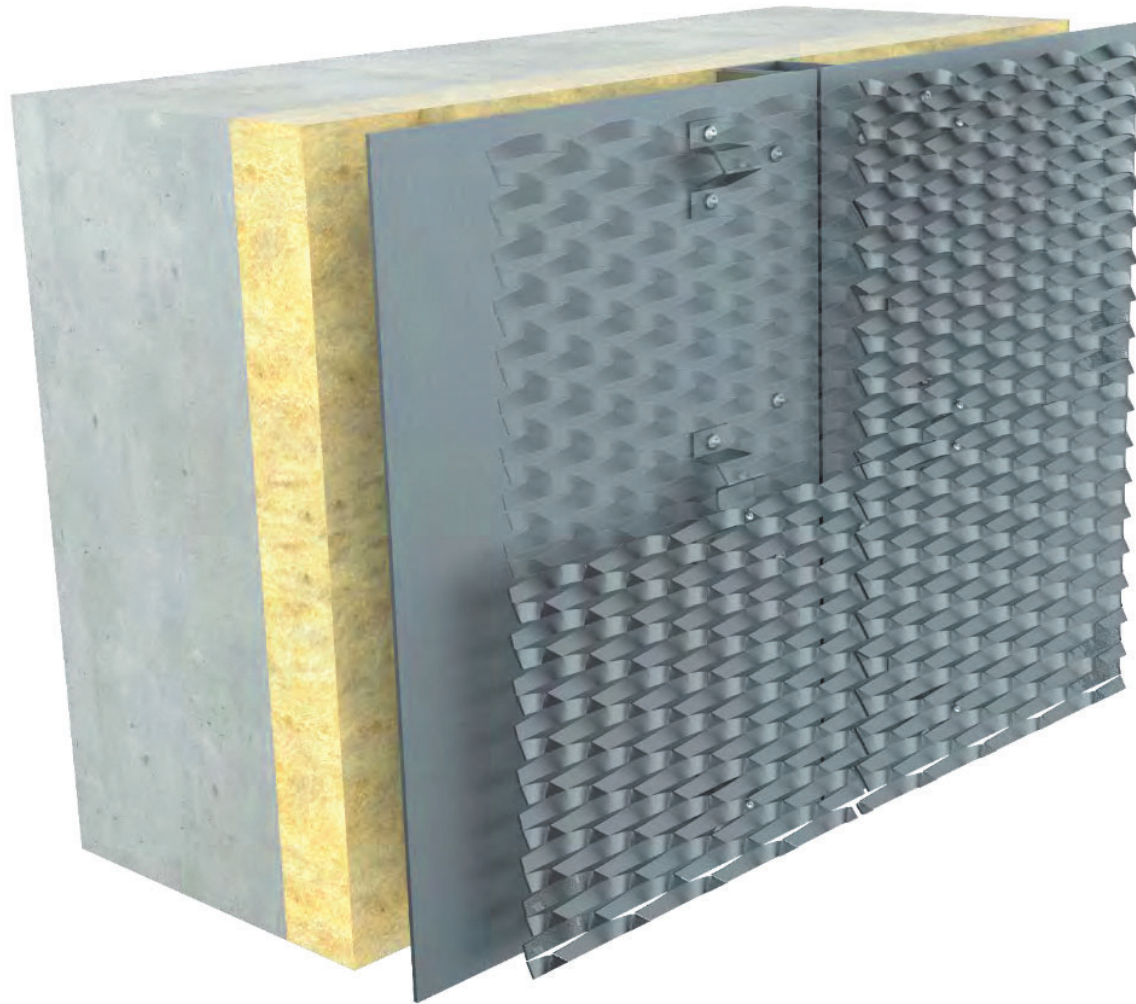
VERDECKT

befestigt



Fassadensysteme

Warmfassade



STRECKMETALL

ARCHITEKTONISCHE HIGHLIGHTS





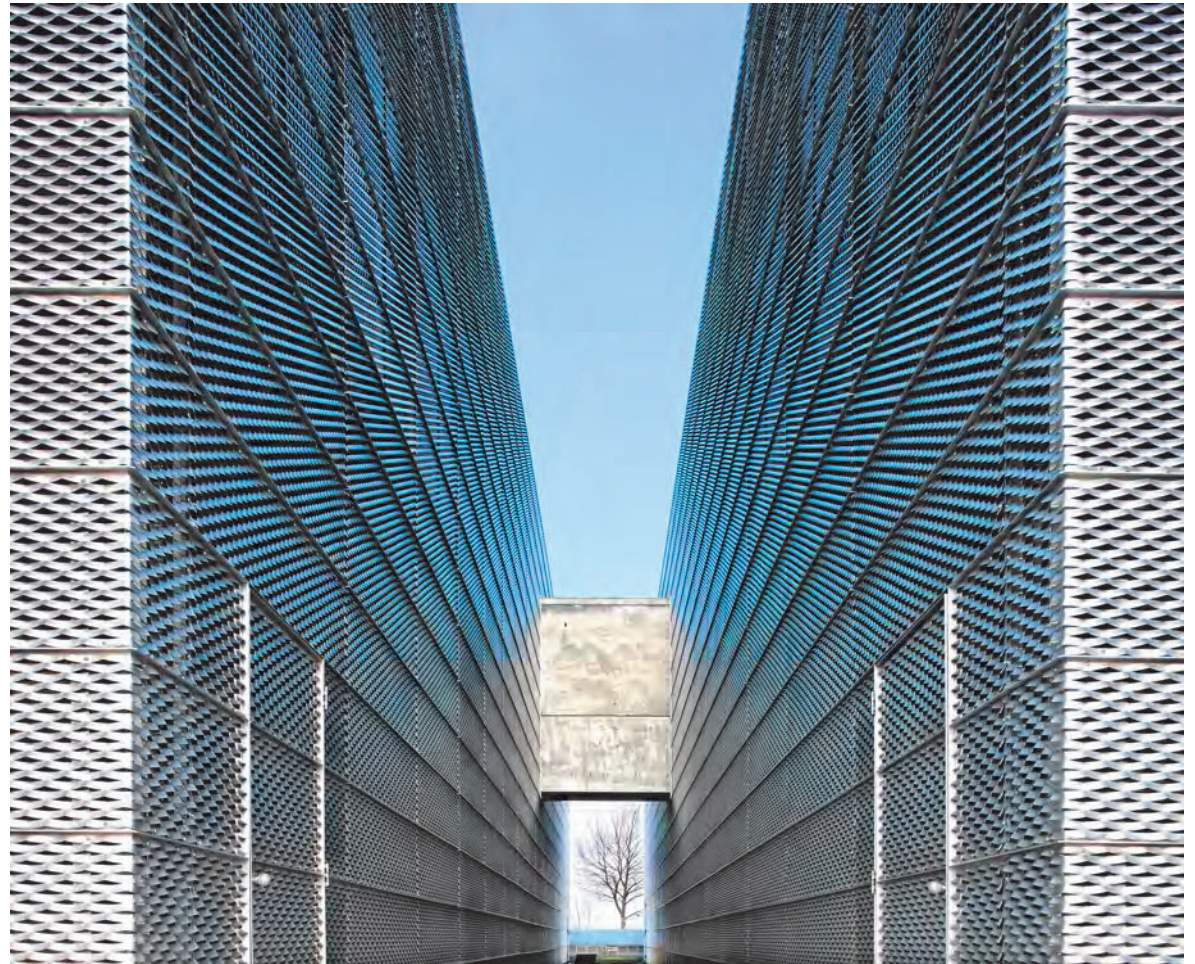










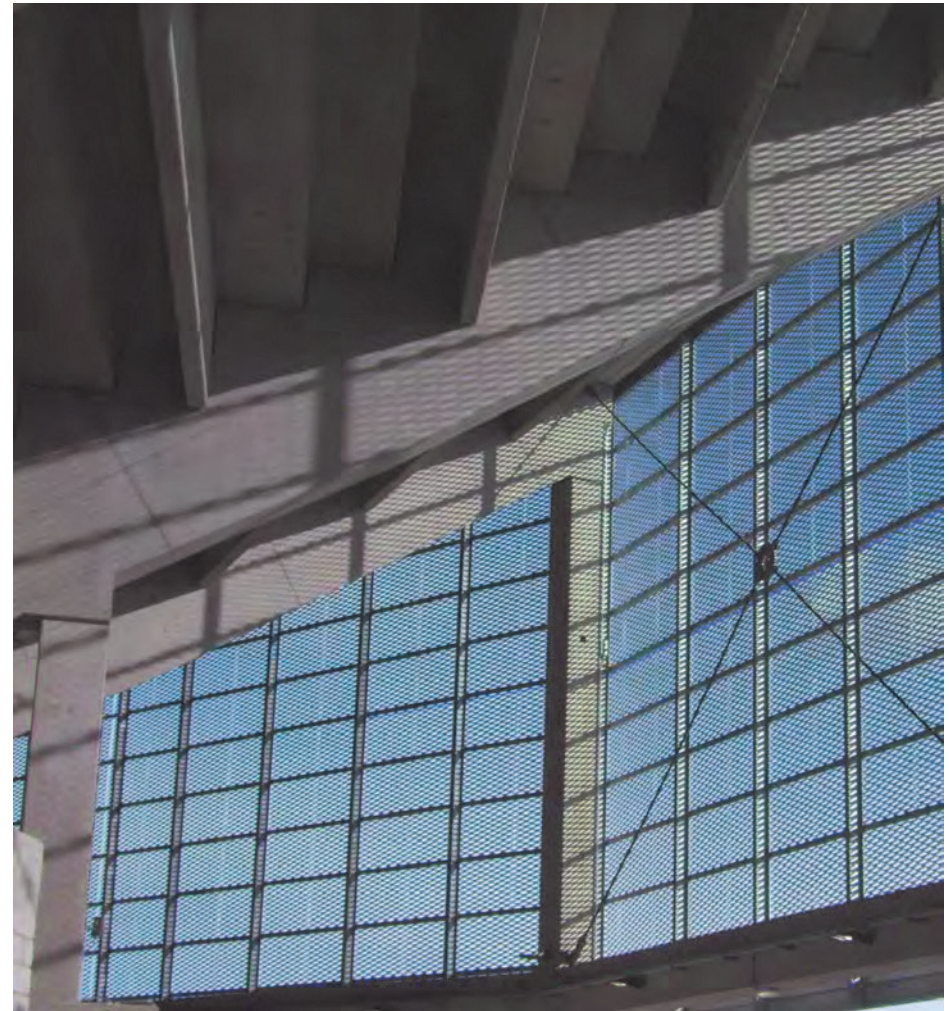
















Live & Online.

Aktuelles Bauwissen aus erster Hand.

bau
information
.com